

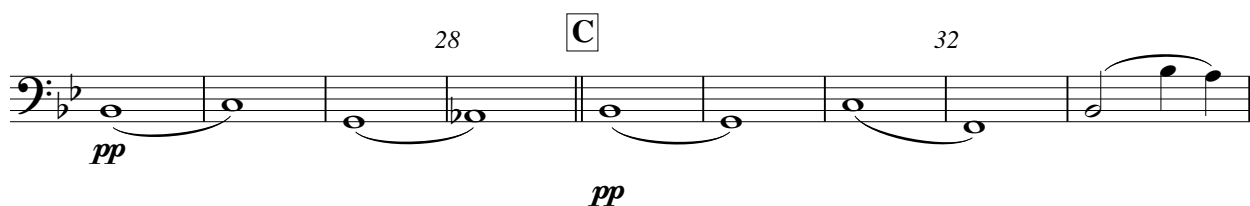
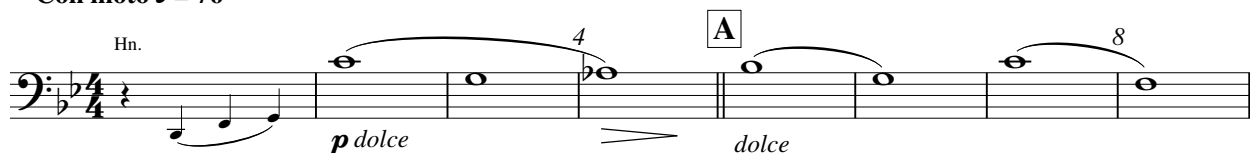
Violoncello

75 Jaor

- voor kinderkoor en harmonie orkest -

Gé Reinders
Hardy Mertens
arr : Sandor Hendriks

Con moto ♩ = 76



V.S.

75 Jaor

mei 2010
Copyright Gé Reinders

[illegible][illegible]

rit. . . . A tempo ♩ = 76 68 72 rit. . . .

ff

The musical score for the bass line of 'The Rose Tree' is written on a single staff in bass clef with a key signature of three flats (B-flat, E-flat, A-flat). The tempo markings are 'rit.' (ritardando), 'A tempo' (return to tempo), and 'rit.' again. The tempo is specified as ♩ = 76. Measure numbers 68 and 72 are indicated above the staff. The dynamics include *ff* (fortissimo) at the beginning. The melody consists of quarter notes, half notes, and whole notes, with some measures containing rests or tied notes. The piece ends with a double bar line.